

BMY - MMC - Preliminary Baseline
2/9/24

ID	Task Mode	Task Name	Duration	Start	Finish	Predecessors	Successors	3												
								Nov	Dec	Qtr 1, 2024			Qtr 2, 2024			Qtr 3, 2024			Qtr 4, 2024	
								Jan	Feb	Mar	Apr	May	Jun	Jul	Aug	Sep	Oct	Nov	Dec	Jan
1		MARJAREE MASON CENTER	247 days?	Thu 1/4/24	Fri 12/13/24															
2		EARLY DESIGN NEEDS	220 days?	Thu 1/4/24	Wed 11/6/24															
3		Fire Sprinkler - Bid Walk	15 days	Thu 1/4/24	Wed 1/24/24															
4		BIDS/REVIEW - Fire Sprinkler	5 days	Wed 2/7/24	Tue 2/13/24	5	6													
5		OWNER APPROVAL - Fire Sprinkler	2 days	Wed 2/14/24	Thu 2/15/24	4	6													
6		SUBCONTRACT - Fire Sprinkler	5 days	Fri 2/16/24	Thu 2/22/24	5	7													
7		FIRE DESIGN - CITY APPROVAL	30 days	Fri 2/23/24	Thu 4/4/24	6														
8		DESIGN - Elec/Plumb - Underslab	15 days	Mon 1/22/24	Fri 2/9/24		9													
9		ADVERTISE/BID - Elec/Plumb - Underslab	10 days	Mon 2/12/24	Fri 2/23/24	8	10													
10		OWNER APPROVAL - Elec/Plumb - Underslab	3 days	Mon 2/26/24	Wed 2/28/24	9	11													
11		SUBCONTRACT - Elec/Plumb - Underslab	5 days	Thu 2/29/24	Wed 3/6/24	10	12													
12		PROCUREMENT - Elec/Plumb - Underslab	5 days	Thu 3/7/24	Wed 3/13/24	11														
13		DESIGN - HVAC	15 days	Mon 2/5/24	Fri 2/23/24		14													
14		ADVERTISE/BID - HVAC	10 days	Mon 2/26/24	Fri 3/8/24	13	15													
15		OWNER APPROVAL - HVAC	3 days	Mon 3/11/24	Wed 3/13/24	14	16													
16		SUBCONTRACT - HVAC	5 days	Thu 3/14/24	Wed 3/20/24	15	17													
17		PROCUREMENT - HVAC	5 days	Thu 3/21/24	Wed 3/27/24	16														
18		DESIGN - Framing	15 days	Mon 2/12/24	Fri 3/1/24		19													
19		ADVERTISE/BID - Framing	10 days	Mon 3/4/24	Fri 3/15/24	18	20													

Project: MMC - Baseline Draft - Date: Tue 2/20/24

Task		Project Summary		Manual Task		Start-only		Deadline	
Split		Inactive Task		Duration-only		Finish-only		Progress	
Milestone		Inactive Milestone		Manual Summary Rollup		External Tasks		Manual Progress	
Summary		Inactive Summary		Manual Summary		External Milestone			

BMY - MMC - Preliminary Baseline
2/9/24

ID	Task Mode	Task Name	Duration	Start	Finish	Predecessors	Successors	3												
								Nov	Dec	Qtr 1, 2024			Qtr 2, 2024			Qtr 3, 2024			Qtr 4, 2024	
								Jan	Feb	Mar	Apr	May	Jun	Jul	Aug	Sep	Oct	Nov	Dec	Jan
20		OWNER APPROVAL - Framing	3 days	Mon 3/18/24	Wed 3/20/24	19	21	OWNER APPROVAL - Framing 3/18 3/20												
21		SUBCONTRACT - Framing	5 days	Thu 3/21/24	Wed 3/27/24	20	22	SUBCONTRACT - Framing 3/21 3/27												
22		PROCUREMENT - Framing	10 days	Thu 3/28/24	Wed 4/10/24	21	79	PROCUREMENT - Framing 3/28 4/10												
23		OWNER/ARCH. DEADLINES	50 days?	Mon 2/12/24	Fri 4/19/24			OWNER/ARCH. DEADLINES 2/12 4/19												
24		Floor Plan w/ Dimensions	1 day	Fri 2/23/24	Fri 2/23/24			Floor Plan w/ Dimensions 2/23 2/23												
25		Final Underslab Plumb/Elec. Design	1 day	Tue 3/5/24	Tue 3/5/24			Final Underslab Plumb/Elec. Design 3/5 3/5												
26		FOUNDATION PERMIT	1 day	Wed 3/6/24	Wed 3/6/24			FOUNDATION PERMIT 3/6 3/6												
27		BUILDING PERMIT	1 day	Mon 3/25/24	Mon 3/25/24			BUILDING PERMIT 3/25 3/25												
28		Final Floor Plan	1 day	Mon 3/25/24	Mon 3/25/24			Final Floor Plan 3/25 3/25												
29		Low Voltage Design	1 day	Mon 4/1/24	Mon 4/1/24			Low Voltage Design 4/1 4/1												
30		Final Furniture Layout	1 day	Fri 4/19/24	Fri 4/19/24			Final Furniture Layout 4/19 4/19												
31		Final Exterior Elevation																		
32		LONG LEAD ITEMS	200 days	Thu 2/1/24	Wed 11/6/24			LONG LEAD ITEMS 2/1 11/6												
33		Switchgear	200 days	Thu 2/1/24	Wed 11/6/24			Switchgear 2/1 11/6												
34		Mechanical - HVAC Units																		
35		Storefront/Glazing																		
36		Cabinets																		
37		Light Fixtures																		
38		Doors & Frames																		

Project: MMC - Baseline Draft - Date: Tue 2/20/24

Task		Project Summary		Manual Task		Start-only		Deadline	
Split		Inactive Task		Duration-only		Finish-only		Progress	
Milestone		Inactive Milestone		Manual Summary Rollup		External Tasks		Manual Progress	
Summary		Inactive Summary		Manual Summary		External Milestone			

BMY - MMC - Preliminary Baseline
2/9/24

ID	Task Mode	Task Name	Duration	Start	Finish	Predecessors	Successors	Qtr 1, 2024			Qtr 2, 2024			Qtr 3, 2024			Qtr 4, 2024			Qtr 1, 2025
								Nov	Dec	Jan	Feb	Mar	Apr	May	Jun	Jul	Aug	Sep	Oct	Nov
39		Low Voltage Material																		
40		FA Devices/Panel																		
41		Elevator																		
42		Decorative Finishes																		
43		Monument/Marquee Signs																		
44		SUBMITTAL DEADLINES	0 days?	Thu 1/4/24	Thu 1/4/24															
45		Fire Sprinkler System																		
46		Plumbing Piping																		
47		Electrical Conduit																		
48		HVAC Units/Ducting																		
49		Metal Studs																		
50		Rebar Dowels																		
51		Concrete Mix Design																		
52		Storefront/Windows																		
53		Doors/Frames																		
54		Insulation																		
55		Gypsum Board																		
56		ABATEMENT & DEMOLITION	34 days	Mon 1/15/24	Thu 2/29/24															
57		NOTIFICATIONS (AIR BOARD)	10 days	Fri 1/19/24	Thu 2/1/24		58,66,67													

SUBMITTAL DEADLINES
1/4 ◆ 1/4

ABATEMENT & DEMOLITION
1/15 — 2/29

NOTIFICATIONS (AIR BOARD)
1/19 — 2/1

Project: MMC - Baseline Draft -
Date: Tue 2/20/24

Task		Project Summary		Manual Task		Start-only		Deadline	
Split		Inactive Task		Duration-only		Finish-only		Progress	
Milestone		Inactive Milestone		Manual Summary Rollup		External Tasks		Manual Progress	
Summary		Inactive Summary		Manual Summary		External Milestone			

BMY - MMC - Preliminary Baseline
2/9/24

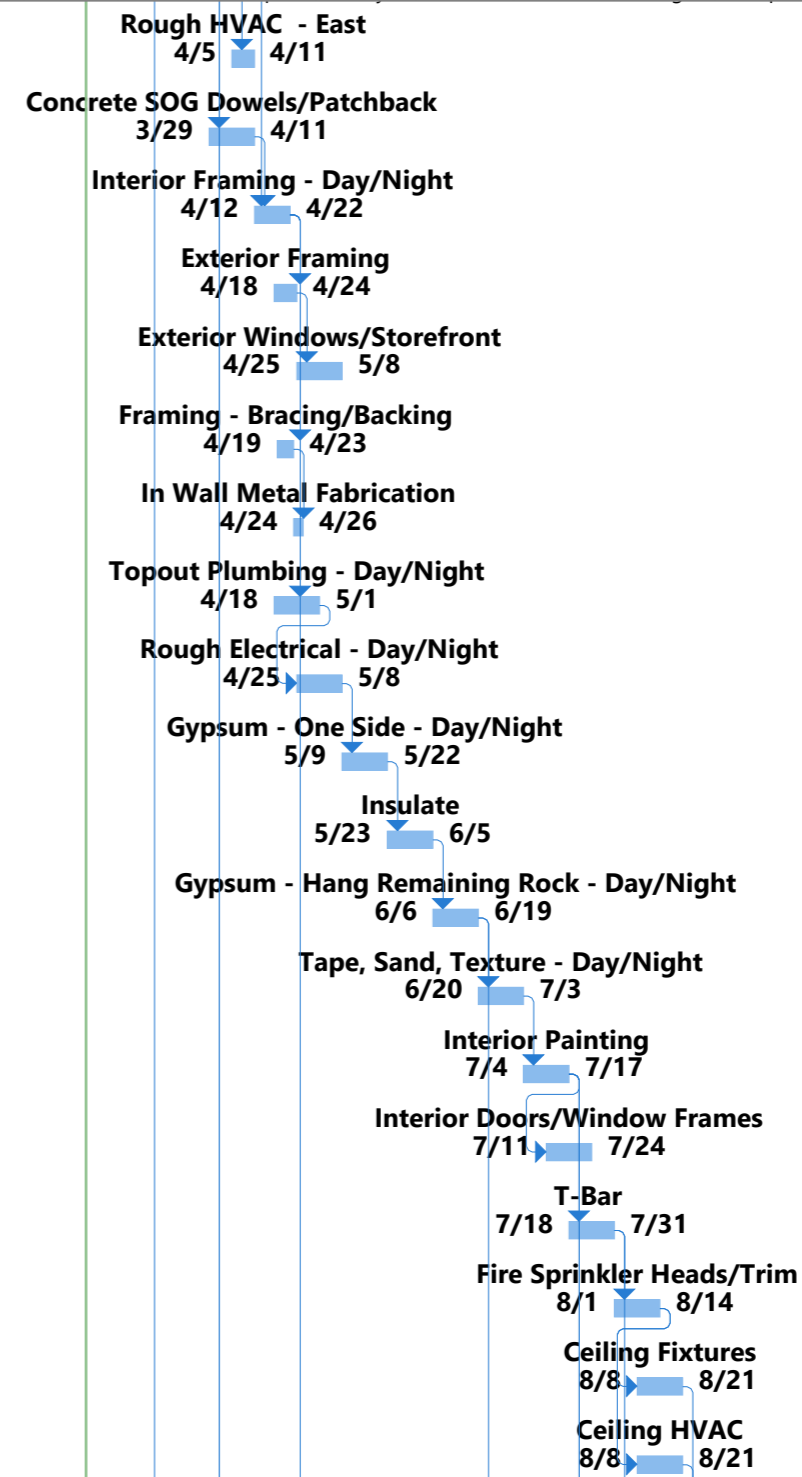
ID	Task Mode	Task Name	Duration	Start	Finish	Predecessors	Successors	3													
								Nov	Dec	Qtr 1, 2024			Qtr 2, 2024			Qtr 3, 2024			Qtr 4, 2024		Qtr 1, 2025
								Jan	Feb	Mar	Apr	May	Jun	Jul	Aug	Sep	Oct	Nov	Dec	Jan	
58		DEMO PERMIT	0 days	Fri 2/2/24	Fri 2/2/24	57															
59		PROTECT SURFACES	5 days	Tue 1/23/24	Mon 1/29/24																
60		SAFE OFF GAS	0 days	Mon 1/15/24	Mon 1/15/24																
61		Owner Salvage Items Removed	8 days	Wed 1/24/24	Fri 2/2/24																
62		CAP SEWER/WATER	5 days	Mon 1/29/24	Fri 2/2/24																
63		Elevator Consult	1 day	Fri 2/2/24	Fri 2/2/24																
64		SAFE OFF/TEMP ELECTRICAL/ALARM	7 days	Tue 1/23/24	Wed 1/31/24																
65		Pre-Demo Consult	1 day	Fri 2/2/24	Fri 2/2/24																
66		ABATEMENT/2nd Floor Ext. Panels	20 days	Fri 2/2/24	Thu 2/29/24	57															
67		DEMOLITION (Building)	20 days	Fri 2/2/24	Thu 2/29/24	57															
68		AT RISK WORK	205 days	Mon 3/4/24	Fri 12/13/24																
69		1st Floor	205 days	Mon 3/4/24	Fri 12/13/24																
70		Layout Walls	5 days	Mon 3/4/24	Fri 3/8/24		71FS-3 days,122														
71		Sawcut Layout - Water/Sewer/Elec.	5 days	Wed 3/6/24	Tue 3/12/24	70FS-3 days	72FS-3 days														
72		Sawcut/Removal	5 days	Fri 3/8/24	Thu 3/14/24	71FS-3 days	73,74,75														
73		Underslab/Overhead Plumbing	10 days	Fri 3/15/24	Thu 3/28/24	72	125														
74		Overhead Fire Sprinkler	10 days	Fri 3/15/24	Thu 3/28/24	72	76,126														
75		Underslab Electrical	10 days	Fri 3/15/24	Thu 3/28/24	72	78,127														
76		Rough HVAC - West	5 days	Fri 3/29/24	Thu 4/4/24	74	77														

Project: MMC - Baseline Draft - Date: Tue 2/20/24

Task		Project Summary		Manual Task		Start-only		Deadline	
Split		Inactive Task		Duration-only		Finish-only		Progress	
Milestone		Inactive Milestone		Manual Summary Rollup		External Tasks		Manual Progress	
Summary		Inactive Summary		Manual Summary		External Milestone			

BMY - MMC - Preliminary Baseline
2/9/24

ID	Task Mode	Task Name	Duration	Start	Finish	Predecessors	Successors	Qtr 1, 2024			Qtr 2, 2024			Qtr 3, 2024			Qtr 4, 2024			Qtr 1, 2025
								Nov	Dec	Jan	Feb	Mar	Apr	May	Jun	Jul	Aug	Sep	Oct	Nov
77		Rough HVAC - East	5 days	Fri 4/5/24	Thu 4/11/24	76														
78		Concrete SOG Dowels/Patchback	10 days	Fri 3/29/24	Thu 4/11/24	75	79													
79		Interior Framing - Day/Night	7 days	Fri 4/12/24	Mon 4/22/24	78,22	82FS-2 days,84FS-3													
80		Exterior Framing	5 days	Thu 4/18/24	Wed 4/24/24	79FS-3 days	81													
81		Exterior Windows/Storefront	10 days	Thu 4/25/24	Wed 5/8/24	80														
82		Framing - Bracing/Backing	3 days	Fri 4/19/24	Tue 4/23/24	79FS-2 days	83													
83		In Wall Metal Fabrication	3 days	Wed 4/24/24	Fri 4/26/24	82														
84		Topout Plumbing - Day/Night	10 days	Thu 4/18/24	Wed 5/1/24	79FS-3 days	85FS-5 days													
85		Rough Electrical - Day/Night	10 days	Thu 4/25/24	Wed 5/8/24	84FS-5 days	86													
86		Gypsum - One Side - Day/Night	10 days	Thu 5/9/24	Wed 5/22/24	85	87													
87		Insulate	10 days	Thu 5/23/24	Wed 6/5/24	86	88													
88		Gypsum - Hang Remaining Rock -	10 days	Thu 6/6/24	Wed 6/19/24	87	89,139													
89		Tape, Sand, Texture - Day/Night	10 days	Thu 6/20/24	Wed 7/3/24	88	90													
90		Interior Painting	10 days	Thu 7/4/24	Wed 7/17/24	89	91FS-5 days,92,97,141													
91		Interior Doors/Window Frames	10 days	Thu 7/11/24	Wed 7/24/24	90FS-5 days														
92		T-Bar	10 days	Thu 7/18/24	Wed 7/31/24	90	100,93													
93		Fire Sprinkler Heads/Trim	10 days	Thu 8/1/24	Wed 8/14/24	92	94FS-5 days,95FS-5 days													
94		Ceiling Fixtures	10 days	Thu 8/8/24	Wed 8/21/24	93FS-5 days	145													
95		Ceiling HVAC	10 days	Thu 8/8/24	Wed 8/21/24	93FS-5 days	96													

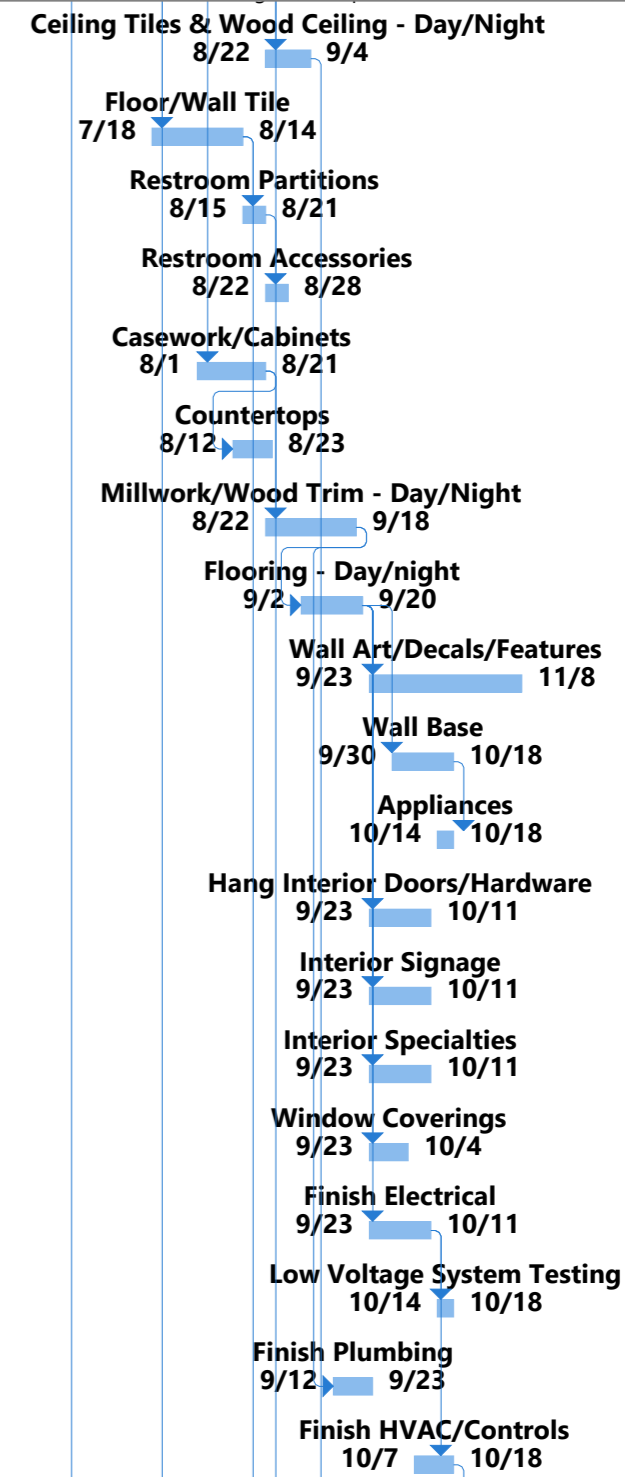


Project: MMC - Baseline Draft - Date: Tue 2/20/24

Task		Project Summary		Manual Task		Start-only		Deadline	
Split		Inactive Task		Duration-only		Finish-only		Progress	
Milestone		Inactive Milestone		Manual Summary Rollup		External Tasks		Manual Progress	
Summary		Inactive Summary		Manual Summary		External Milestone			

BMY - MMC - Preliminary Baseline
2/9/24

ID	Task Mode	Task Name	Duration	Start	Finish	Predecessors	Successors	3		Qtr 1, 2024			Qtr 2, 2024			Qtr 3, 2024			Qtr 4, 2024			Qtr 1, 2025		
								Nov	Dec	Jan	Feb	Mar	Apr	May	Jun	Jul	Aug	Sep	Oct	Nov	Dec	Jan		
96		Ceiling Tiles & Wood Ceiling - Day/Night	10 days	Thu 8/22/24	Wed 9/4/24	95	147																	
97		Floor/Wall Tile	20 days	Thu 7/18/24	Wed 8/14/24	90	98,149																	
98		Restroom Partitions	5 days	Thu 8/15/24	Wed 8/21/24	97	99																	
99		Restroom Accessories	5 days	Thu 8/22/24	Wed 8/28/24	98																		
100		Casework/Cabinets	15 days	Thu 8/1/24	Wed 8/21/24	92	101FS-8 days,102																	
101		Countertops	10 days	Mon 8/12/24	Fri 8/23/24	100FS-8 days																		
102		Millwork/Wood Trim - Day/Night	20 days	Thu 8/22/24	Wed 9/18/24	100	103FS-13 days,113FS-5																	
103		Flooring - Day/night	15 days	Mon 9/2/24	Fri 9/20/24	102FS-13 days	105FS+5 days,104,108,109																	
104		Wall Art/Decals/Features	35 days	Mon 9/23/24	Fri 11/8/24	103																		
105		Wall Base	15 days	Mon 9/30/24	Fri 10/18/24	103FS+5 days	106FS-5 days																	
106		Appliances	5 days	Mon 10/14/24	Fri 10/18/24	105FS-5 days																		
107		Hang Interior Doors/Hardware	15 days	Mon 9/23/24	Fri 10/11/24	103																		
108		Interior Signage	15 days	Mon 9/23/24	Fri 10/11/24	103																		
109		Interior Specialties	15 days	Mon 9/23/24	Fri 10/11/24	103																		
110		Window Coverings	10 days	Mon 9/23/24	Fri 10/4/24	103																		
111		Finish Electrical	15 days	Mon 9/23/24	Fri 10/11/24	103	112,114FS-5 days																	
112		Low Voltage System Testing	5 days	Mon 10/14/24	Fri 10/18/24	111																		
113		Finish Plumbing	8 days	Thu 9/12/24	Mon 9/23/24	102FS-5 days																		
114		Finish HVAC/Controls	10 days	Mon 10/7/24	Fri 10/18/24	111FS-5 days	115																	



Project: MMC - Baseline Draft -
Date: Tue 2/20/24

Task		Project Summary		Manual Task		Start-only		Deadline	
Split		Inactive Task		Duration-only		Finish-only		Progress	
Milestone		Inactive Milestone		Manual Summary Rollup		External Tasks		Manual Progress	
Summary		Inactive Summary		Manual Summary		External Milestone			

BMY - MMC - Preliminary Baseline
2/9/24

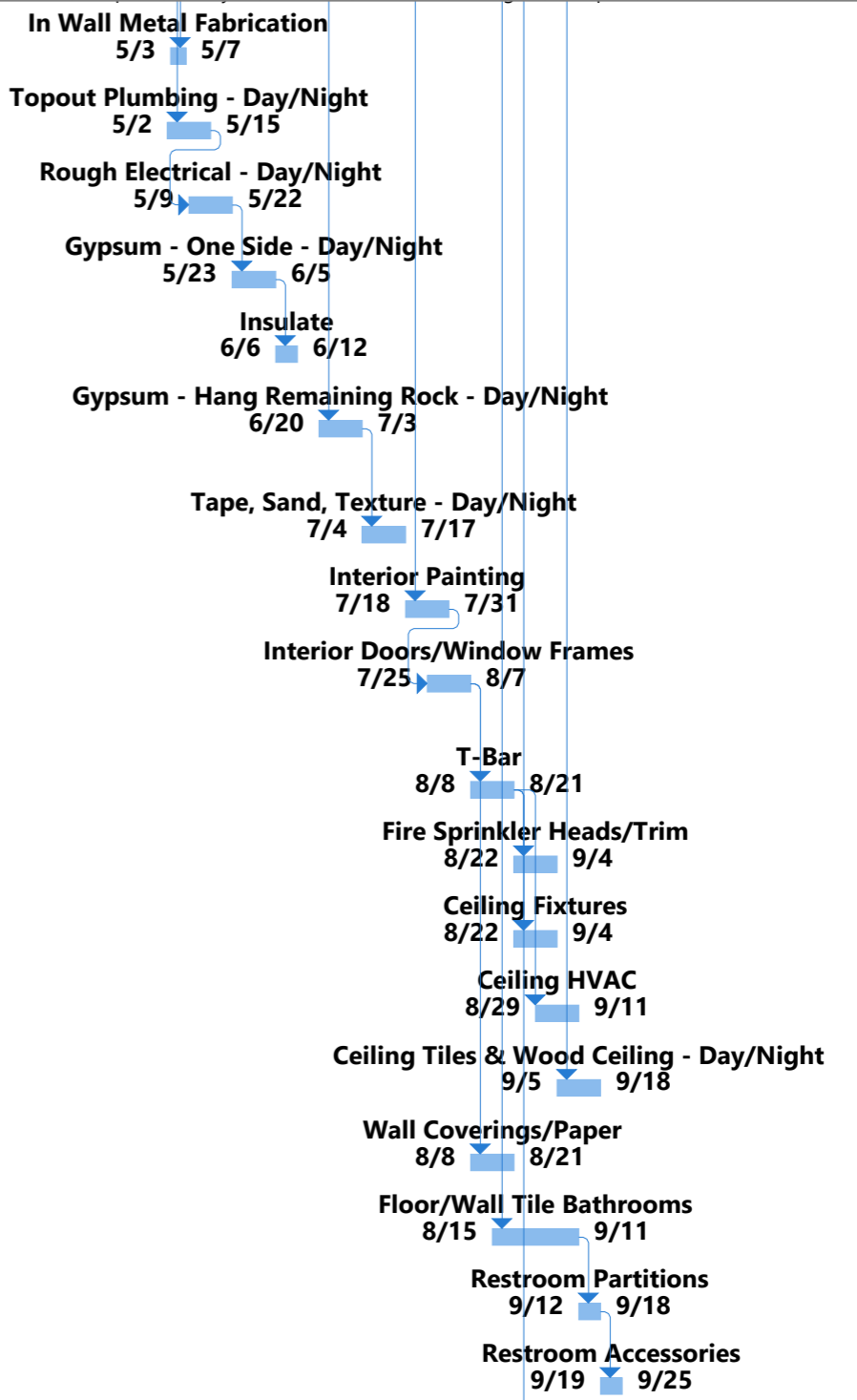
ID	Task Mode	Task Name	Duration	Start	Finish	Predecessors	Successors	Qtr 1, 2024			Qtr 2, 2024			Qtr 3, 2024			Qtr 4, 2024			Qtr 1, 2025
								Nov	Dec	Jan	Feb	Mar	Apr	May	Jun	Jul	Aug	Sep	Oct	Nov
115		HVAC Test & Balance	5 days	Mon 10/21/24	Fri 10/25/24	114	116													
116		Test all Systems	2 days	Mon 10/28/24	Tue 10/29/24	115	118,117													
117		Terazzo Flooring	15 days	Wed 10/30/24	Tue 11/19/24	116	118													
118		Generate Punchlist	3 days	Wed 11/20/24	Fri 11/22/24	116,117	119													
119		Punchlist Work	10 days	Mon 11/25/24	Fri 12/6/24	118	120													
120		Final Clean	5 days	Mon 12/9/24	Fri 12/13/24	119														
121		2nd Floor	200 days	Mon 3/11/24	Fri 12/13/24															
122		Layout Interior Walls	5 days	Mon 3/11/24	Fri 3/15/24	70	123FS-3 days													
123		Coring Layout	5 days	Wed 3/13/24	Tue 3/19/24	122FS-3 days	124FS-3 days													
124		Deck Coring	5 days	Fri 3/15/24	Thu 3/21/24	123FS-3 days														
125		Overhead Plumbing	7 days	Fri 3/29/24	Mon 4/8/24	73														
126		Overhead Fire Sprinkler	10 days	Fri 3/29/24	Thu 4/11/24	74	128													
127		Overhead Electrical	10 days	Fri 3/29/24	Thu 4/11/24	75														
128		Rough HVAC - West	7 days	Fri 4/12/24	Mon 4/22/24	126	129													
129		Rough HVAC - East	7 days	Tue 4/23/24	Wed 5/1/24	128														
130		Interior Framing - Day/Night	7 days	Tue 4/23/24	Wed 5/1/24	79	133FS-2 days,135,131													
131		Exterior Framing	5 days	Thu 5/2/24	Wed 5/8/24	130	132													
132		Exterior Windows/Storefront	10 days	Thu 5/9/24	Wed 5/22/24	131														
133		Framing - Bracing/Backing	3 days	Tue 4/30/24	Thu 5/2/24	130FS-2 days	134													

Project: MMC - Baseline Draft - Date: Tue 2/20/24

Task		Project Summary		Manual Task		Start-only		Deadline	
Split		Inactive Task		Duration-only		Finish-only		Progress	
Milestone		Inactive Milestone		Manual Summary Rollup		External Tasks		Manual Progress	
Summary		Inactive Summary		Manual Summary		External Milestone			

BMY - MMC - Preliminary Baseline
2/9/24

ID	Task Mode	Task Name	Duration	Start	Finish	Predecessors	Successors	Qtr 1, 2024			Qtr 2, 2024			Qtr 3, 2024			Qtr 4, 2024			Qtr 1, 2025
								Nov	Dec	Jan	Feb	Mar	Apr	May	Jun	Jul	Aug	Sep	Oct	Nov
134		In Wall Metal Fabrication	3 days	Fri 5/3/24	Tue 5/7/24	133														
135		Topout Plumbing - Day/Night	10 days	Thu 5/2/24	Wed 5/15/24	130	136FS-5 days													
136		Rough Electrical - Day/Night	10 days	Thu 5/9/24	Wed 5/22/24	135FS-5 days	137													
137		Gypsum - One Side - Day/Night	10 days	Thu 5/23/24	Wed 6/5/24	136	138													
138		Insulate	5 days	Thu 6/6/24	Wed 6/12/24	137														
139		Gypsum - Hang Remaining Rock - Day/Night	10 days	Thu 6/20/24	Wed 7/3/24	88	140													
140		Tape, Sand, Texture - Day/Night	10 days	Thu 7/4/24	Wed 7/17/24	139														
141		Interior Painting	10 days	Thu 7/18/24	Wed 7/31/24	90	142FS-5 days													
142		Interior Doors/Window Frames	10 days	Thu 7/25/24	Wed 8/7/24	141FS-5 days	143,148													
143		T-Bar	10 days	Thu 8/8/24	Wed 8/21/24	142	146FS+5 days,152,144													
144		Fire Sprinkler Heads/Trim	10 days	Thu 8/22/24	Wed 9/4/24	143														
145		Ceiling Fixtures	10 days	Thu 8/22/24	Wed 9/4/24	94														
146		Ceiling HVAC	10 days	Thu 8/29/24	Wed 9/11/24	143FS+5 days														
147		Ceiling Tiles & Wood Ceiling - Day/Night	10 days	Thu 9/5/24	Wed 9/18/24	96														
148		Wall Coverings/Paper	10 days	Thu 8/8/24	Wed 8/21/24	142														
149		Floor/Wall Tile Bathrooms	20 days	Thu 8/15/24	Wed 9/11/24	97	150													
150		Restroom Partitions	5 days	Thu 9/12/24	Wed 9/18/24	149	151													
151		Restroom Accessories	5 days	Thu 9/19/24	Wed 9/25/24	150														

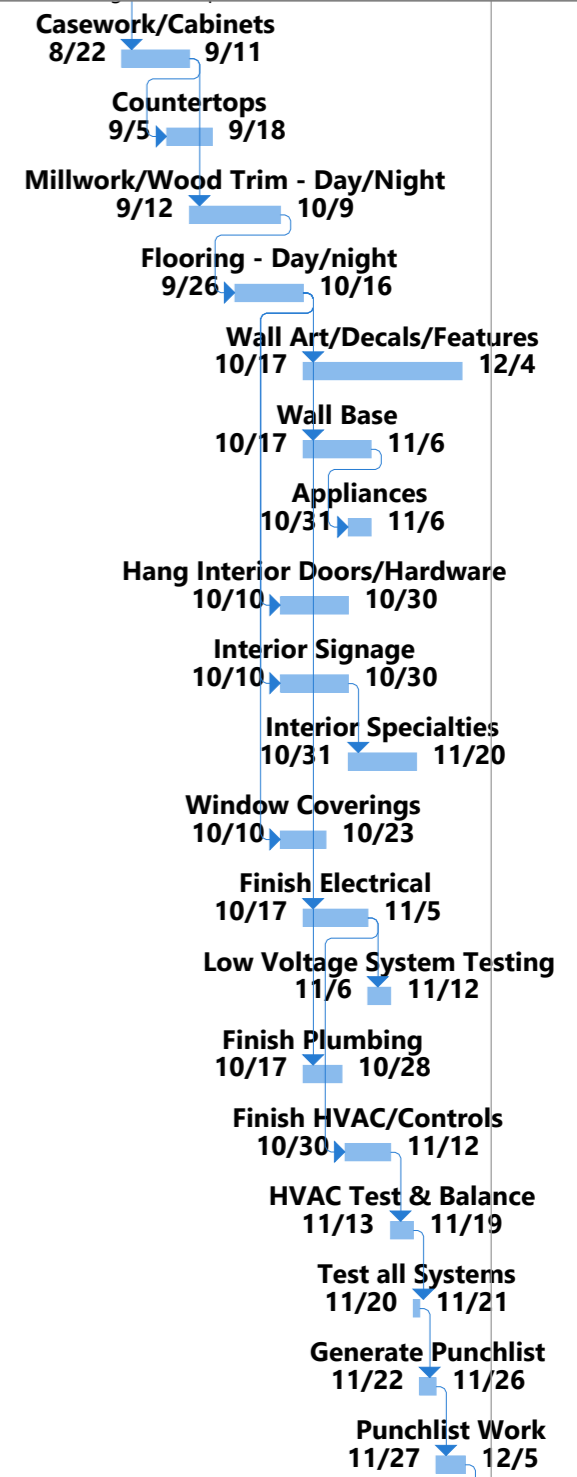


Project: MMC - Baseline Draft -
Date: Tue 2/20/24

Task		Project Summary		Manual Task		Start-only		Deadline	
Split		Inactive Task		Duration-only		Finish-only		Progress	
Milestone		Inactive Milestone		Manual Summary Rollup		External Tasks		Manual Progress	
Summary		Inactive Summary		Manual Summary		External Milestone			

BMY - MMC - Preliminary Baseline
2/9/24

ID	Task Mode	Task Name	Duration	Start	Finish	Predecessors	Successors	Qtr 1, 2024		Qtr 2, 2024			Qtr 3, 2024			Qtr 4, 2024			Qtr 1, 2025	
								Nov	Dec	Jan	Feb	Mar	Apr	May	Jun	Jul	Aug	Sep	Oct	Nov
152		Casework/Cabinets	15 days	Thu 8/22/24	Wed 9/11/24	143	153FS-5 days,154													
153		Countertops	10 days	Thu 9/5/24	Wed 9/18/24	152FS-5 days														
154		Millwork/Wood Trim - Day/Night	20 days	Thu 9/12/24	Wed 10/9/24	152	155FS-10 days													
155		Flooring - Day/night	15 days	Thu 9/26/24	Wed 10/16/24	154FS-10 days	157,159FS-5 days,160FS-5													
156		Wall Art/Decals/Features	35 days	Thu 10/17/24	Wed 12/4/24	155														
157		Wall Base	15 days	Thu 10/17/24	Wed 11/6/24	155	158FS-5 days													
158		Appliances	5 days	Thu 10/31/24	Wed 11/6/24	157FS-5 days														
159		Hang Interior Doors/Hardware	15 days	Thu 10/10/24	Wed 10/30/24	155FS-5 days														
160		Interior Signage	15 days	Thu 10/10/24	Wed 10/30/24	155FS-5 days	161													
161		Interior Specialties	15 days	Thu 10/31/24	Wed 11/20/24	160														
162		Window Coverings	10 days	Thu 10/10/24	Wed 10/23/24	155FS-5 days														
163		Finish Electrical	14 days	Thu 10/17/24	Tue 11/5/24	155	164,166FS-5 days													
164		Low Voltage System Testing	5 days	Wed 11/6/24	Tue 11/12/24	163														
165		Finish Plumbing	8 days	Thu 10/17/24	Mon 10/28/24	155														
166		Finish HVAC/Controls	10 days	Wed 10/30/24	Tue 11/12/24	163FS-5 days	167													
167		HVAC Test & Balance	5 days	Wed 11/13/24	Tue 11/19/24	166	168													
168		Test all Systems	2 days	Wed 11/20/24	Thu 11/21/24	167	169													
169		Generate Punchlist	3 days	Fri 11/22/24	Tue 11/26/24	168	170													
170		Punchlist Work	7 days	Wed 11/27/24	Thu 12/5/24	169	171													



Project: MMC - Baseline Draft -
Date: Tue 2/20/24

Task		Project Summary		Manual Task		Start-only		Deadline	
Split		Inactive Task		Duration-only		Finish-only		Progress	
Milestone		Inactive Milestone		Manual Summary Rollup		External Tasks		Manual Progress	
Summary		Inactive Summary		Manual Summary		External Milestone			

